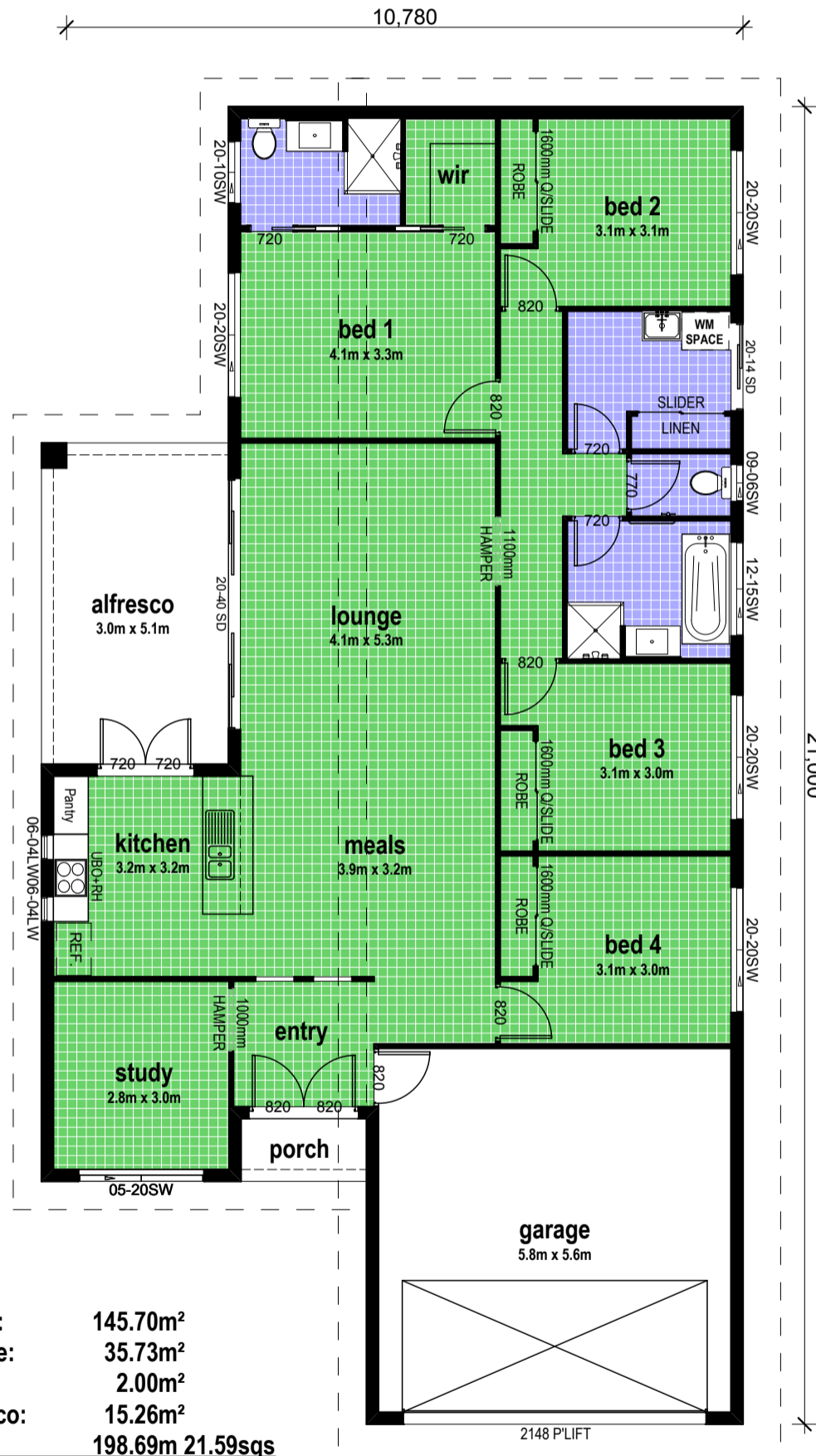


ELEVATION



Areas:	
Living:	145.70m ²
Garage:	35.73m ²
Porch:	2.00m ²
Alfresco:	15.26m ²
Total:	198.69m 21.59sqs

ST. CRISPIN 198

WEBSITE: www.nqhomes.com.au
Subject to copyright.
Drawings and illustrations are a guide only.